

New Parking Procedure for SGM Dismissal

WHY?

- Approximately 20- 25 more cars this year
- Overflow cars are forced to go into church side
- Several near misses with cars and kids have been witnessed
- This is a serious safety issue
- New format gives us more space for cars



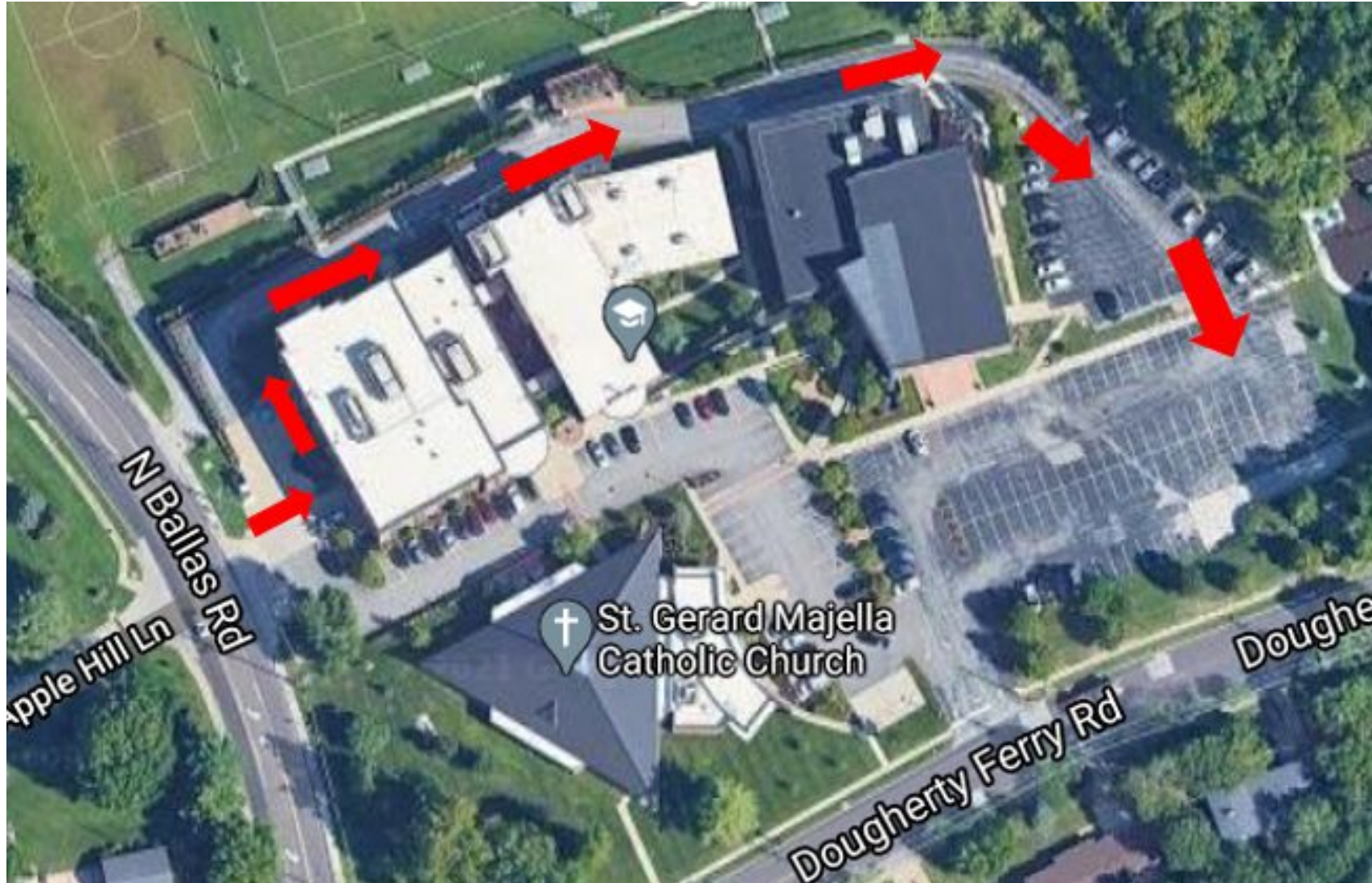
New Parking for SGM Dismissal: **Main Lot**

- Entrance to parking lot from Ballas will open at 2:30 PM.
- Entrance to parking lot from Dougherty Ferry will close at 2:30 PM.
- Enter from Ballas and proceed around back (like morning drop-off).
- Cars will face opposite direction as current procedure.
- Dismissal from lot upon whistle. See diagram for order of row departure.

Parking for **Church Lot**

- You will not be allowed to enter church side without parking pass. Please have it displayed.
- Enter from Ballas and proceed to church side.
(Dougherty Ferry Entrance will be blocked at 2:30.)
- Please back in to all spots.

1. After 2:30, enter parking lot from Ballas and proceed around the back driveway. The Dougherty Ferry entrance will be blocked off.



2. Fill in cars beginning with green rows. Cars should line up according to diagram either facing church (green rows) or Dougherty Ferry Road (red, yellow and blue rows).



3. Overflow cars will file into the east lot and around the back driveway.



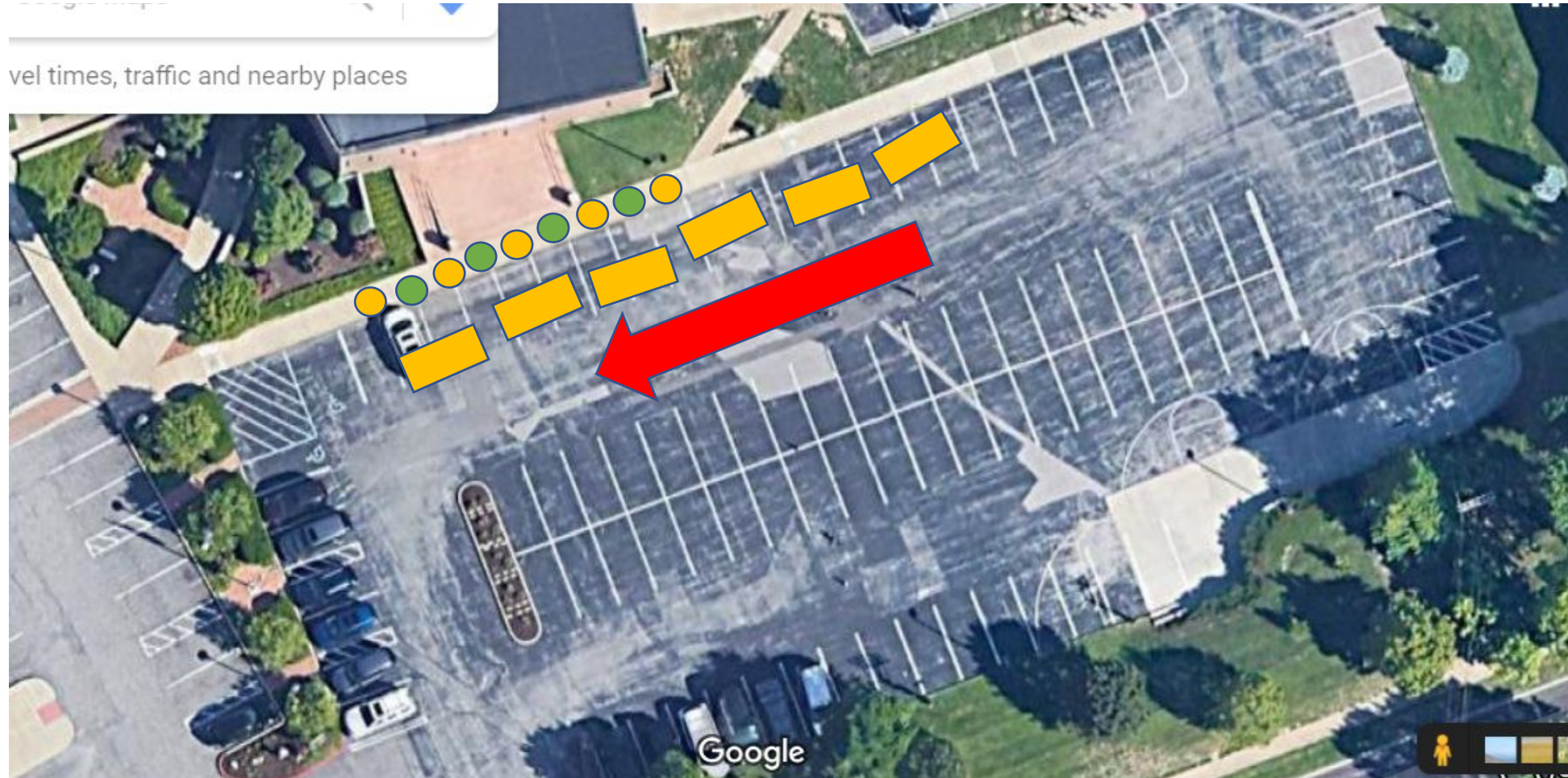
4. Cars will file out upon whistle from staff. See numbers and arrow for order of exit, starting with green lines.



5. Cars will file out upon whistle from staff. See arrow for order of exit.



6. For those that arrive late, pick up kids at gym stage as is current procedure. If children do not see a parent waiting or in the main lot, they will be instructed to wait on the stage. Children will not be allowed to walk around back looking for cars.



Extra notes:

- For the first three weeks, parent volunteers will be available to help guide cars. If you are willing to help, please let Ms. Guthrie know.
- Please do not park your car in the main lot before 2:30.
- If the students do not see their car in the main lot or a parent does not come get them, they will remain on the stage to be picked up once the parking lot clears.

Thank You for keeping all of our kids safe!

